

APPLIED™ ANALYTICS

OMA Colorimeter

Automated, full-spectrum color analysis.

- » UV-Vis nova II™ spectrophotometer
- » Solid state with no moving parts
- » Analyzes liquid or gas stream
- » Measures complete visible absorbance spectrum from 340 to 720 nm at ~1 nm resolution
- » Used for both linear and non-linear scales
- » Available scales include ASTM D-1500, APHA, Saybolt, Rosin, nonstandard scales
- » Xenon light source with 5 years average lifespan
- » Excellent dynamic range for accuracy through large fluctuations in stream opacity



Measurement:

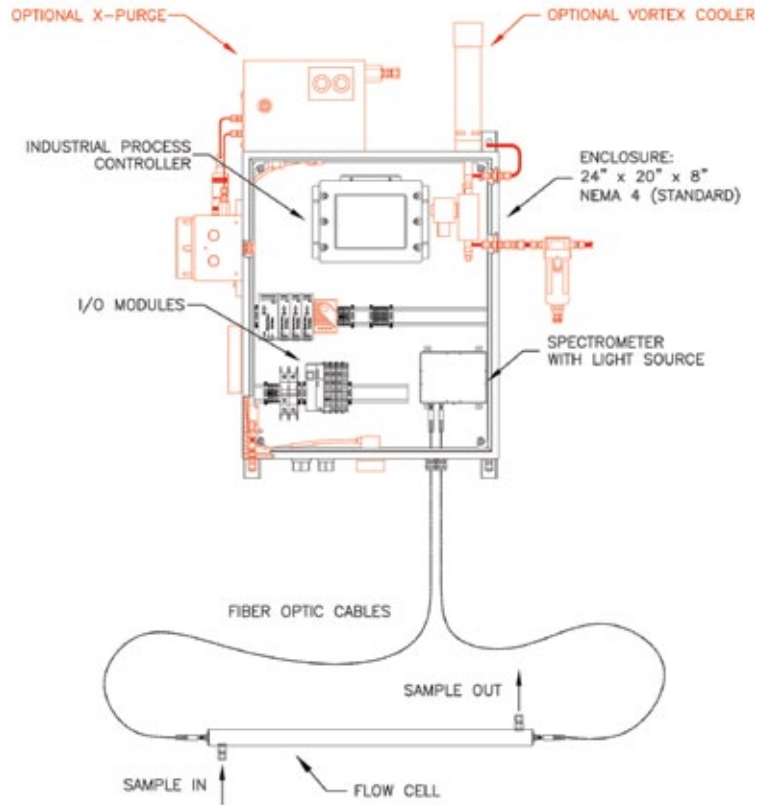
color

OMA-300 Colorimeter Specifications

Note: All performance specifications herein are subject to the assumption that all design for integration and sample conditioning is first approved by Applied Analytics.

Detector	nova-II™ UV-Vis diode array spectrophotometer
Light Source	Pulsed Xe lamp (average 5 year lifespan)
Fiber Optic Cables	Standard: 1.8 meter 600 µm core fibers (qty=2) <i>Longer lengths available.</i>
Sample Phase	Gas or liquid
Sample Cell	Standard: SS316 flow cell (length from 2 mm to 600 mm) <i>Other materials available.</i>
Sample Conditioning	Custom design if needed.
Accuracy	Photometric accuracy: ±0.004 AU <i>Please inquire for specific measurement accuracies.</i>
Repeatability	±0.5% of scale
Analyzer Calibration	Calibrated at factory or site with certified calibration gases/liquids (never requires re-calibration)
Verification	Simple verification with samples or neutral density filters
Ambient Temperature	Standard: 0 to 35 °C (32 to 95 °F) With temperature control: -20 to 55 °C (-4 to 131 °F)
Sample Temperature	Using in situ probe: -20 to 200 °C (-4 to 392 °F) Using standard flow cell: -20 to 150 °C (-4 to 302 °F) <i>Wider ranges available.</i>
Sample Pressure (max.)	Using standard flow cell: 206 bar (3,000 psi)
Electrical	85 to 264 VAC 47 to 63 Hz
Power Consumption	45 Watts
User Interface	Touch-screen industrial controller with 640x480 LCD
Standard Outputs	1 galvanically isolated 4-20mA output per measurement 2 digital outputs for fault and SCS control
Optional Outputs	Modbus TCP/IP; RS-232; Fieldbus; Profibus; HART; more
Wetted Materials	<i>Various custom materials available.</i> Standard: K7 glass, Viton, stainless steel 316L
Environment	Indoor/Outdoor — no shelter required
Certifications	General Purpose Class I, Division 1 — <i>optional</i> Class I, Division 2 — <i>optional</i> ATEX Exp II 2(2) GD — <i>optional</i> Any other certification — <i>please inquire</i>

Standard OMA-300 Process Analyzer
(common options shown in red color)



Weight	Analyzer: 32 lbs. (15 kg)
Size	Analyzer: 24" H x 20" W x 8" D (610 x 508 x 203 mm)
Enclosure	<i>Various enclosures available.</i> Standard: wall-mounted carbon steel NEMA 4 enclosure

MADE IN THE USA

LAST REVISION: FEBRUARY 2013



A registered trademark of Applied Analytics Group BV. | www.a-a-inc.com

Headquarters + Manufacturing

Applied Analytics, Inc.
Burlington, MA, USA | sales@a-a-inc.com

North America Sales

Applied Analytics North America, Ltd.
Houston, TX, USA | sales@appliedanalytics.us

Europe Sales

Applied Analytics Europe, SpA
Milan, Italy | sales@appliedanalytics.eu

Asia Pacific Sales

Applied Analytics Asia Pte. Ltd.
Singapore | sales@appliedanalytics.com.sg

Middle East Sales

Applied Analytics Middle East (FZE)
Sharjah, UAE | sales@appliedanalytics.ae

India Sales

Applied Analytics (India) Pte. Ltd.
Mumbai, India | sales@appliedanalytics.in

Brazil Sales

Applied Analytics do Brasil
Rio de Janeiro, Brazil | sales@aadbl.com.br